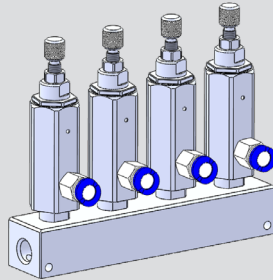


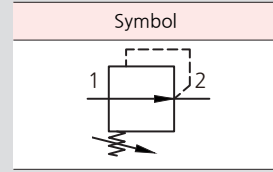
KAR110 series



KAR110-01BT



Manifold Type



Feature

- Compact, lightweight regulator
- Manifold block can be configured in multiple units

How to order

※ Type codes are listed alphabetically.

KAR110 - ① ② ③ ④ - ⑤

① Series

KAR110	M5
--------	----

② Thread type

01	Male thread R1/8
M5	Female thread M5

③ Bracket

Nil	None
B	Bracket + fixing nut attachment type (standard)

※ Brackets are packed separately.

④ Pressure gauge

T	Circular pressure gauge
---	-------------------------

⑤ Set pressure range

Nil	0.2 ~ 0.7MPa
2	0.05 ~ 0.2MPa

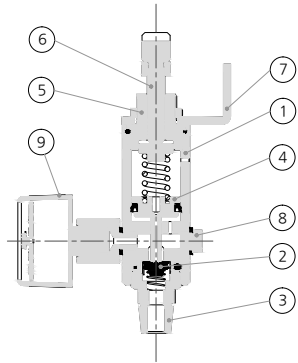
Specifications

Fluid	Air
Max. Supply pressure	1.2MPa
Max. Operating pressure	0.8MPa
Pressure range	0.2 ~ 0.7MPa
Fluid temp. & Ambient temp.	5 ~ 60℃
Structure	Relief type

⚠ Caution

1. Use clean and dry compressed air free from oil and foreign substances.
2. Attaching an oil mist filter on the supply side is recommended.

Structure



No.	Parts	Materials
1	Body	AL
2	Valve	NBR
3	Valve guide	Brass
4	Piston	Brass
5	Bonnet	Brass
6	Adjust bolt	Brass
7	L-bracket	Rolled steel sheet

Dimensions

