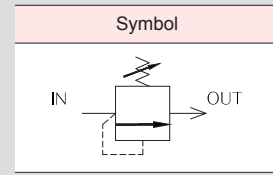


KRV231 Series



KRV231-02



Feature

- When the pressure rises, release the pressure above the set value to the atmosphere and maintain the set pressure
- Protects compressed air systems from internal overpressure

How to order

KRV231 - 02 B T - 3K
 ① ② ③ ④ ⑤ ⑥

① Series

KRV231	Rc(PT) 1/8", 1/4"
--------	-------------------

② Thread type

Nil	Rc(PT) Thread(Standard)
G	G Thread
N	NPT Thread

③ Port size

		KRV231	
		Body	pressure gauge x2
01	Rc(PT)1/8"	•	Rc(PT) 1/8"
02	Rc(PT)1/4"	•	

④ Bracket

Nil	None
B	Bracket+Fixed nut(Standard)

※ The brackets are packed separately.

⑤ Pressure gauge

Nil	None
T	Circular pressure gauge: 1.0 / 0.4 / 0.2MPa

⑥ Regulating range

Nil	0.05 ~ 0.7MPa(Standard)
3K	0.05 ~ 0.3MPa
1K	0.05 ~ 0.1MPa

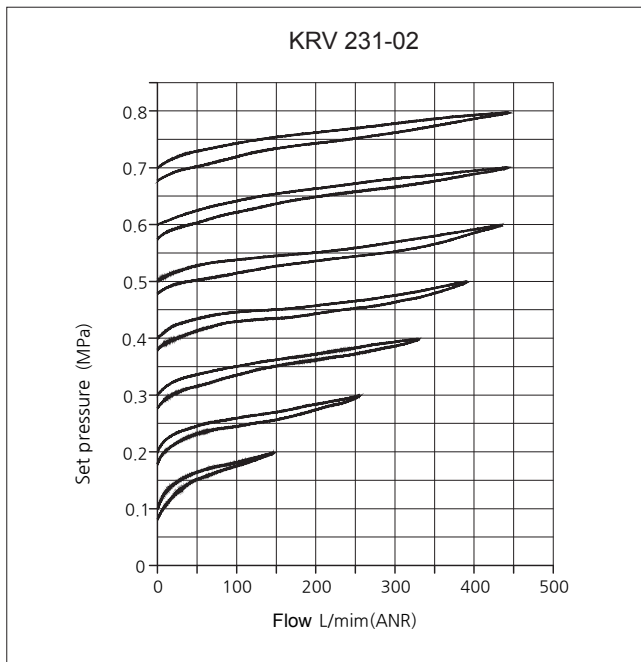
Specification

Fluid	Air	
Proof pressure	1.5MPa	
Max. operating pressure	1.0MPa	
Regulating range	0.7MPa	0.05~0.7MPa
	0.3MPa	0.05~0.3MPa
	0.1MPa	0.05~0.1MPa
Port size	Rc(PT) 1/8, 1/4"	
Pressure gauge	Rc(PT) 1/8"(x2)	
Ambient & fluid temperature	5~60℃	
Weight(g)	0.32 (Excluding pressure gauge and bracket)	

⚠ Precautions

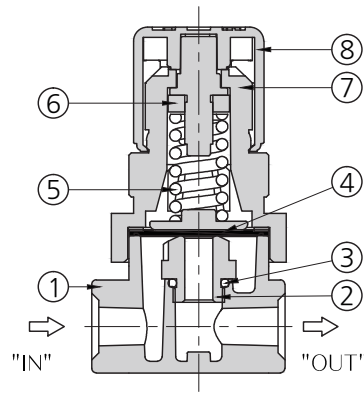
1. Do not use as a safety valve.
2. Check the direction when connecting the piping.
(Connect to "IN" side)
3. Make sure there are no foreign substances in the piping.

Flow characteristics (representative value)



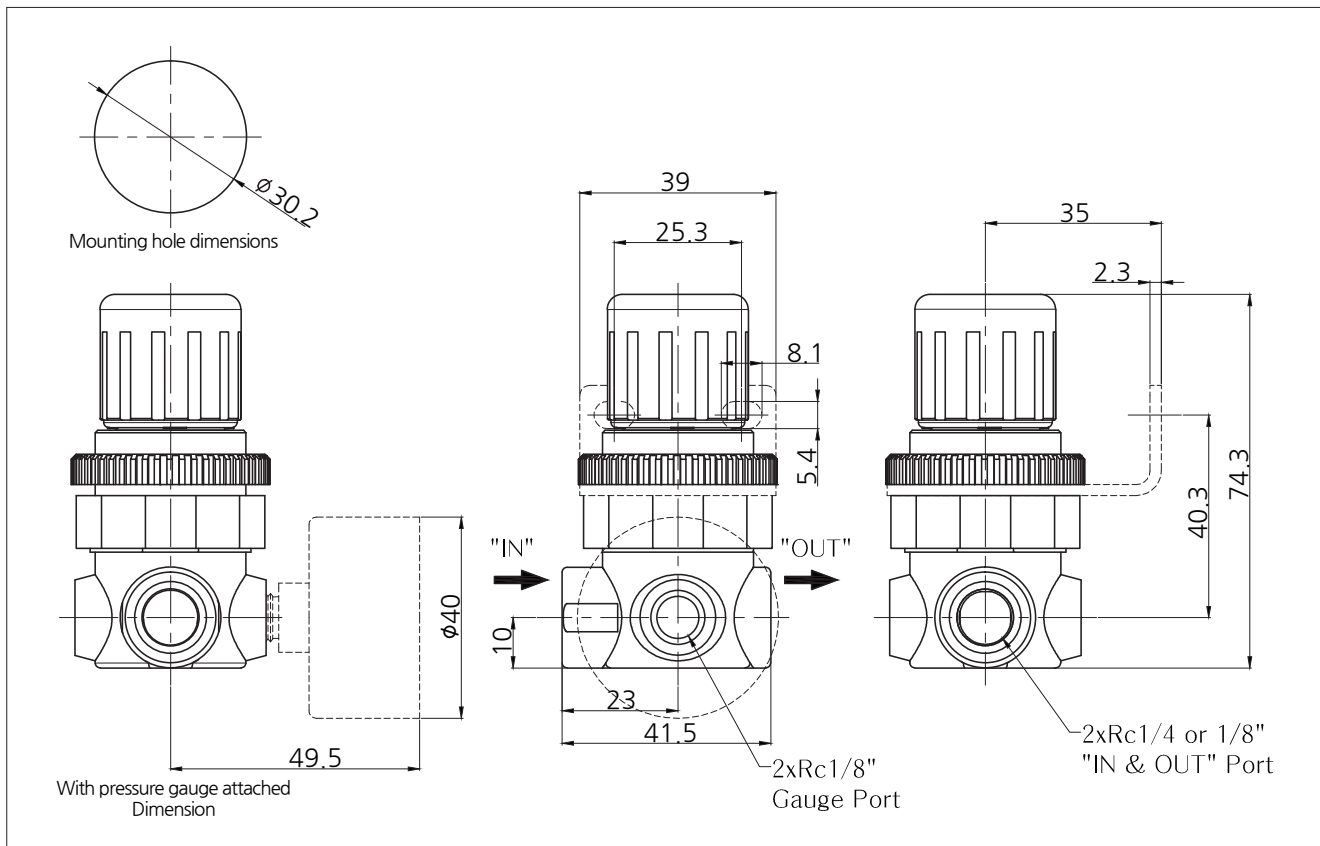
※ The above data are representative measurement values and are not guaranteed.
 ※ The flow rate value may differ depending on the piping and setting conditions.

Structure



No.	Parts	Material
1	Body	ALDC
2	Valve seat	BRASS
3	O-ring	NBR
4	Diaphragm Ass'y	NBR, AL, POM
5	Spring	STEEL
6	Adust Bolt Ass'y	STEEL
7	Bonnet	POM
8	Handle	POM

Dimensions





Precautions for safe use of the product

Please read before use.

Handling and precautions

1. Precautions before installation

- ⦿ Before installation, flush the piping to remove foreign materials.
- ⦿ The port with arrow mark is supply port. check the installation direction and pipe properly.

If the direction changes, the relief will not work.

2. How to install and adjust pressure

- ⦿ When the adjustment handle is pulled upward, the lock is released, the set pressure can be adjusted.

When the handle is pressed, it is locked and the set pressure cannot be adjusted.

- ⦿ Pull the adjustment handle upward and turn it to the right to increase set pressure, and turn it to the left to decrease set pressure.

- ⦿ When supplying pressure to the piping after installing the product, check the pressure gauge (pressure) of the device that supplies pressure in the piping.

After checking the pressure, turn the handle of this relief valve to the right as much as possible,

then open the pressure supply valve to supply pressure in the pipe.

If air is discharged from the "OUT" port of the relief valve after supplying pressure, turn the handle to the right to adjust until there is no air discharge.

After supplying pressure, if there is no air discharge from the "OUT" port of the relief valve,

turn the handle to the left to adjust until a small amount of discharge occurs.

When it is in the above condition, turn the handle slightly to the left and right, and finally set it without air exhaust.

At the final setting, turning the handle to the right can reduce the operating error.

The setting value may change during long-term or frequent use, so check it periodically.

- ⦿ After supplying pressure to the pipe, it is safe to adjust and set the pressure to be maintained in the pipe in parallel with the adjustment of the supply pressure.
- ⦿ When the set pressure is reached, be sure to press the handle and lock it so that the set value does not change.

3. Precautions

- ⦿ The maximum operating pressure should be 1.0 MPa or less.
- ⦿ Setting pressure adjustment range is 0.05~0.7MPa.
- ⦿ Do not use as a safety valve. Relief valves do not temporarily release excessive pressure.
- ⦿ Noise and vibration may occur when a leak occurs due to a foreign object between the diaphragm and the valve seat.
- ⦿ After installing the product, do not place people or unfixed objects near the "OUT" port.