

# KHV series



KHV-300-03

## How to Order

KHV    - 3 0 0 - 03

①                    ②                    ③                    ④                    ⑤

### ① Port type

Nil	Rc(PT) (Standard)
G	G

### ② Body size

2	1/4
3	3/8
4	1/2

### ③ Piping & mounting method

	Piping	Mounting method
0	Side	Body
1	Side	Panel
2	Bottom	Body
3	Bottom	Panel

### ④ Position

Position		Symbol
0	3 Position	
2	2 Position	

### ⑤ Port size

	Body size		
	2	3	4
02	•		
03		•	
04		•	•
06			•

## Specifications

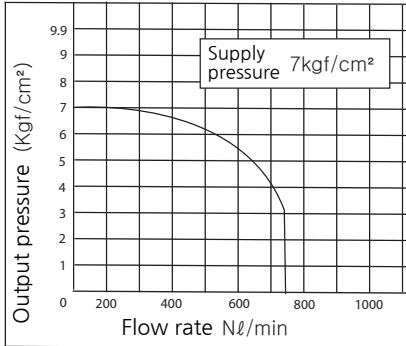
Type	KHV200	KHV300	KHV400
Fluid	Compressed air		
Max. operating pressure	9.9kgf/cm <sup>2</sup> (0.99MPa)		
Proof pressure	15kgf/cm <sup>2</sup> (1.5MPa)		
Effective sectional area mm <sup>2</sup> (Cv)	7.5 (0.4)	20 (1.1)	55 (3.1)
Ambient & fluid temperature	5°C ~ 60°C		
Operating angle	90°		

### ⚠ Precautions

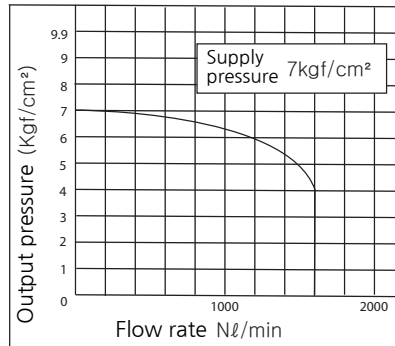
- P and R position can not be changed reciprocally when piping. (Valve plate can be detached)
- Ensure connection so that air is supplied to the port "P". Valve may have air leakage when air pressure is supplied from other ports.
- When the valve is installed in an atmosphere where there is a lot of dust, install a silencer into the port "R". If dust enters the valve from the port "R", it may cause malfunction.
- To stop the valve midway can cause malfunction. Switch the valve to each position quickly and firmly.

**Flow Characteristic**

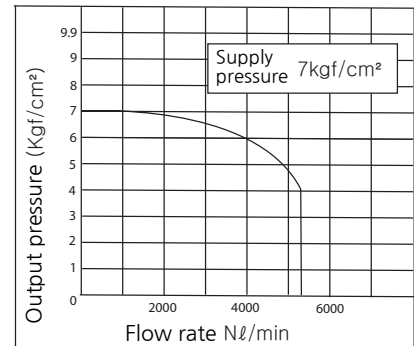
Effective sectional area  $S=7.5\text{mm}^2$



Effective sectional area  $S=20\text{mm}^2$

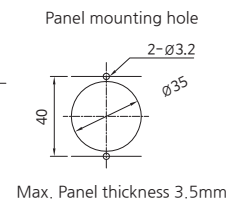
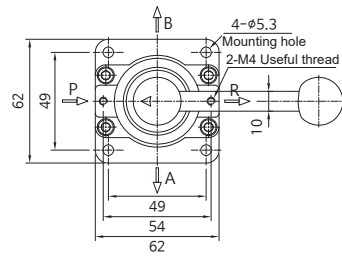
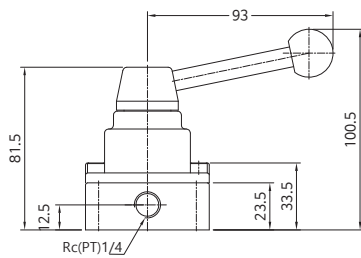


Effective sectional area  $S=55\text{mm}^2$

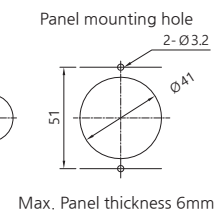
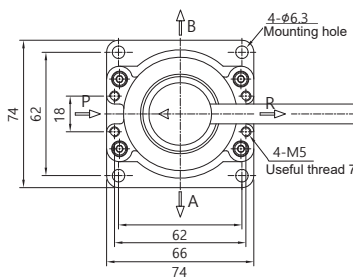
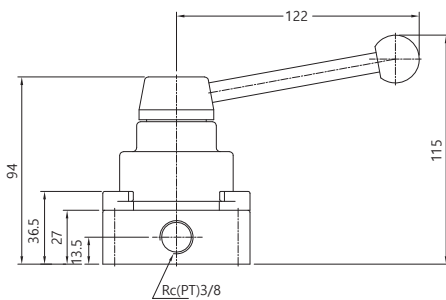


**Dimensions**

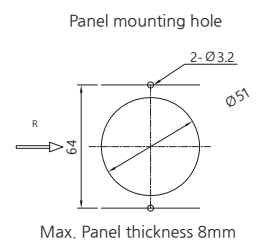
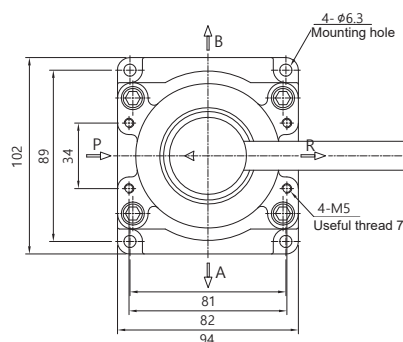
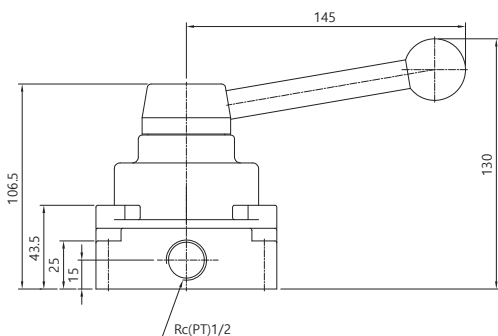
KHV200-02/ Side port



KHV300-03/ Side port

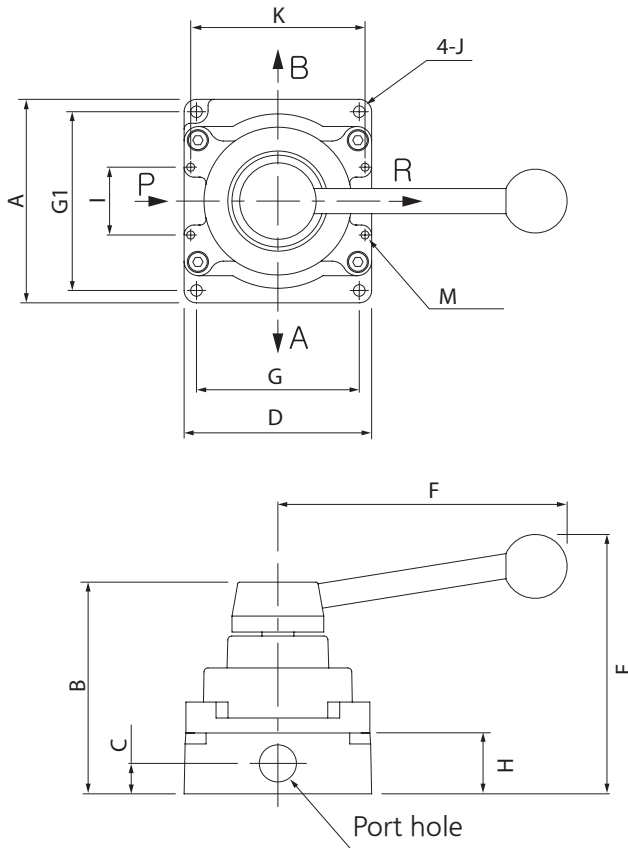


KHV400-04/ Side port

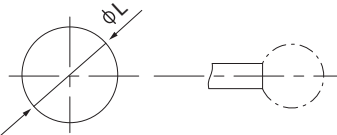


Dimensions

KHV300-04, KHV400-06/ Side port



Panel mounting hole



Model	Max. Panel thickness
KHV300-04	3.5
KHV400-06	8.0

Model	Port size Rc(PT)	A	B	C	D	E	F	G	G1	H	I	J	K	L	M	Weight (g)
KHV300-04	1/2	74	94	13.5	74	115	122	62	62	27	18	6.3	66	41	4-Ø6	830
KHV400-06	3/4	104	111	17	104	140	145	88	88	39	34	6.3	82	51	4-Ø7	1450